



St John Bosco School

21 Clinton Street, New Plymouth. Phone (06) 758-3165

e-mail: office@sjb.school.nz, www.sjb.school.nz

Principal: Mr Dee Luckin

TERM DATES

Term 2
Tue 28 Apr - Fri 3 Jul

Term 3
Mon 20 Jul - Fri 25 Sep

Term 4
Mon 12 Oct - Fri 11 Dec

EVENTS

End of Term 2
Fri 3 July

Start of Term 3
Mon 20 July

Mid Year Interviews
29 & 30 July



From the Principals Desk...

Holiday break: I don't think we'll ever experience another term like we have had with this one. We've learnt a lot over this last term. Especially in relation to distance learning, Hygiene, Health and Safety practices and well being. We are truly blessed to live in a country that when things get tough we unite and work together. We are truly blessed to be a part of a community that cares for each other, keeps each other safe and without any fuss unite to follow guidelines. I said it a lot this term but I'm going to say it again because I really need to. Thank you! Thanks for your support. It's been tough but we did it and got through it together.

I am really looking forward to next term. With our learnings from this term and within reason things back to our new normal we'll be a lot more settled...

These next two weeks will be a great opportunity to recharge, refresh and get ourselves ready for a great term 3. Keep safe and take care.

See you all next term...



Ambrose Golf Day: Although the weather wasn't the flashiest for our Ambrose Golf Day it has again been a great success. The final figure isn't in yet but we will be very close to making \$12,000.00 from this fundraiser. What an amazing outcome!

Again, I would like to thank all of our local businesses, many of them families within our school, that sponsored a hole, provided spot prizes, items for raffles and silent auctions. Your continued support means that we can in the end provide some amazing resources for our children's learning and development during their time at SJB.

A special thank you to Taranaki Steelformers, Claire and Brendon Back, who were our major sponsor on the day meeting many of the associated costs on the day such as the course hire.

Thank you to Brendon Thomson who donated a beast meaning we could provide some great meat packages as prizes and spot prizes on the day.

Many hands make lite work and this was the case on the day. Thank you to our Community group and parents who provided support on the day either cooking, selling, setting up or cleaning up at the end. Your continued support is really appreciated.

I would like to offer a special thank you to **Mike Fleming, Ben Siffleet, Brendon Back and Mike Wildermoth** who behind the scenes are the organisers of what has become a truly refined fundraiser. These guys have made a massive job look relatively easy. But I am fully aware of the time that goes into such an event behind the scenes. Thanks guys for another awesome effort!

Ms Allen's Return to SJB: We are looking forward to welcoming Ms Allen back to school next

term. She will be opening up Puriri and working with our Year 0 children. Cat has really enjoyed her special time with Otis and being a new mum. It'll be lovely to have her back with the team. To support Cat back into her role at SJB and thinking of a very young Otis at home Cat will work reduced time for term 3 & 4 this year. She will be onsite Monday - Wednesday and Thursday and Friday Miss Moesbauer will continue Cat's programme.

Mrs Haveswood Maternity Leave: There are more exciting life events happening at SJB! Mrs Haveswood will also be taking maternity leave this year. Bethany at this stage is looking at beginning her leave on week 6 of term 3. We have been very lucky to negotiate with Mrs Katie Smith and Mrs Helen Baldwin a job share role in Kawakawa for the remainder of the year. This will allow our planned and deliberate junior school teaching routines to continue with ease for Kawakawa.

Junior Playground: We will over the holiday period be replacing some of our Junior playground pieces. A little bit of wear and tear is starting to show...

Mihi Whakatau: It was wonderful yesterday to get a chance to finally formally welcome all our new children to school. It is incredibly important to us that each new child and family receive a mihi whakatau - welcome to our school. Not only is it culturally essential but it is also a great insight into a little bit of local Maori history linked to our school pepeha.

TSB Banking: Banking will start up again next term, every Wednesday before school. Bring in your banking to our school tellers.



Prayer for the Holidays

God we are tired. Thank you for this holiday. We know it maybe cold, wet and windy but you gave us the weather so we can enjoy something different every day.

As you let the earth rest through the winter, we too are gifted with this opportunity to rest and recover from our business and hard work at school and home. Help us share the peace of this time with our family and friends.

Amen



POHUTUKAWA & KOWHAI ART

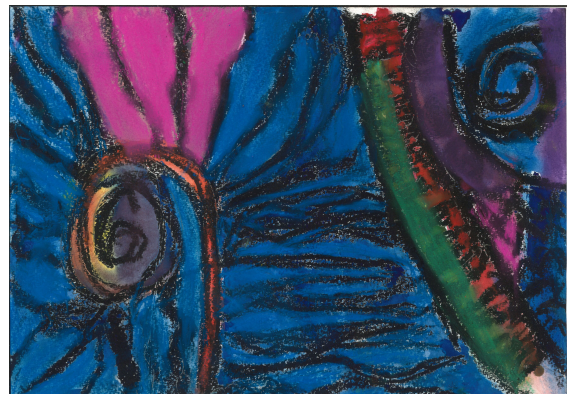
By Honor



By Abigail



By Miela

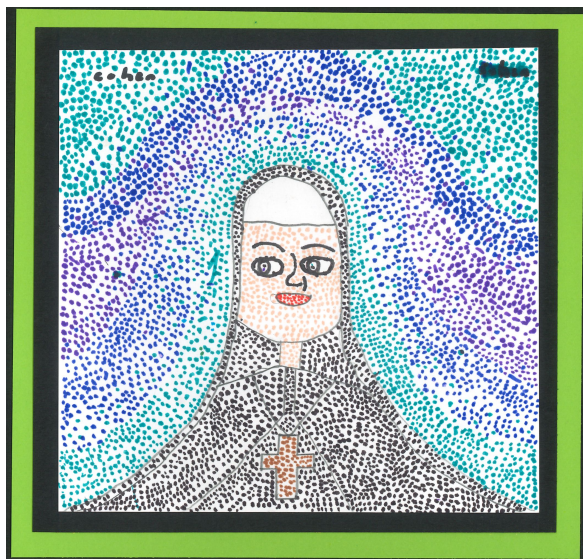


Mission Statement

To provide a Catholic environment where children's rights and individual needs are always considered, independence and confidence are fostered and children are challenged to produce their best efforts.



EUPHRASIE BARBIER ART - ROOM KAURI



By Cohen



By Hailey



By Josh



By Izaro

Attendance Dues Information – July 2020

- Thank you to all families who have made payment or made contact and organised payment arrangements for Attendance Dues this year.
- Attendance Dues statements will be emailed (if we have an email address on file) or posted before the end of this week. Emails will be sent from **Diocese of Palmerston North Attendance Dues Team** dues@pndiocese.org.nz and may appear in your junk/spam folder.
- If you have been adversely affected as a result of COVID-19 we need to know. Please contact your principal, parish priest or our Attendance Dues Team directly so we can advise and help you find a solution that will work.
- One-off payments by credit card or debit card (Visa or Mastercard only) can be made using our website: www.pndiocese.org.nz/education/dues.
- The Attendance Dues team are happy to advise options that will help your family to pay your Attendance Dues. Please contact Anne-Marie, Marcy and Mark before 31st July to discuss payment options with you. Our contact details are as follows: 0800 200 208; or dues@pndiocese.org.nz



THREE KIWI TALES

MORE FABULOUS FIX-IT STORIES
FROM WILDBASE HOSPITAL



—
JANET HUNT

MINDPLUS

HOLIDAY PROGRAMME

SAT JULY 11
155 DEVON STREET
2PM

MindPlus & the Kiwi Conservation Club are proud to host Janet Hunt, one of New Zealand's best known natural history writers. Learn more about the Kiwi, it's conservation and how to care for New Zealand's unique national icon.

Suitable for all children aged 7+

Bring a waste-free afternoon tea to share & a gold coin donation

Please RSVP via:
admin@tgctrust.org.nz




Our School Core Values

Love

Resilience

Co-operation

Service



Nikki Keegan

Licensed Salesperson

M 021 022 82757

E nikkik@westfnat.co.nz

W www.newplymouthfn.co.nz



first national
REAL ESTATE | Western



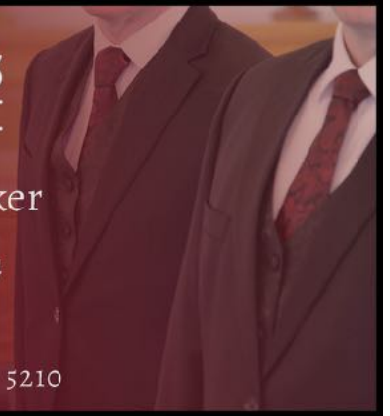
Abraham's
FUNERAL HOME

Mark & Megan Baker

Family owned since 1924

info@wabraham.co.nz

wabraham.co.nz | 06 757 5210



Dwane & Kirsty Lilly Ph: (06) 757 4292
70 Hurlstone Drive, Waiwhakaiho, New Plymouth
Mobile: 0274 408 970
bell-blockpanelbeaters@xtra.co.nz

MONEY A BIT TIGHT?

Our members have access to *Affordable Holiday Homes, Discounted Movies, Education Grants, Competitive Medical Insurance, Retail discounts and more*

Membership just \$43/year*. Join now and start saving!

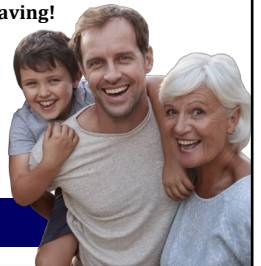
Call Rebecca on 06 758 0769

to find out more about joining us or visit

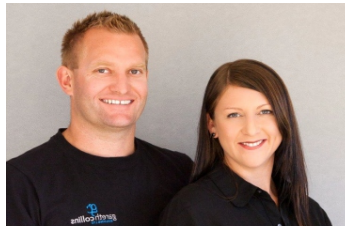
www.manchesterunity.org.nz

Manchester Unity

Making Life Affordable



*Fees correct as of May 2020



NEW HOMES | RENOVATIONS
LIGHT COMMERCIAL | LANDSCAPING

Tania | 0276742557

Gareth | 0277776993

Email | info@gcbuilding.co.nz

garethcollins
BUILDING LTD



Subdivision • Land Development •
Resource Consents

BLAND & JACKSON
SURVEYORS LTD

For many, property is our number 1 asset. Contact Vaughan Maclean for a no obligation consultation to review your properties potential for subdivision.

visit: www.bjls.co.nz / (06) 7586171 / (027) 282 5665 / vaughan.macleand@bjls.co.nz

 **Pure Dental**

Kenny Gallacher
Dental Surgeon BDS (Glasgow)

Natasha Bell
Dental Surgeon BDS (Adelaide)

Kimberley Roper
BDS (Dundee) MJDF

Lizelle Koen
Dental Hygienist

Angela Henderson
Dental Hygienist

Jordan Wearne
Dental Hygienist

465 Devon Street East, New Plymouth, Ph 06 758 5629

**EXPERT
APPLIANCE REPAIRS
GUARANTEED!**

PH: 06 755 2028

FAX: 06 755 2528

EMAIL: d.l.appliances@xtra.co.nz



188 Parklands Ave
Bell Block
New Plymouth 4312

Whiteware & Heat
Pump Specialist
Service
Parts
Sales

www.dandlappliances.co.nz



JANE PARKER

The Finance Lady

in association with **CreditOne**
Smarter Finance

☎ 06 757 9060

📞 027 350 8687

✉ jane@thefinancelady.co.nz

🌐 www.thefinancelady.co.nz

The best thanks The Finance Lady can receive is a recommendation to your friends and family



Taranaki Civil
CONSTRUCTION LTD

**CIVIL ENGINEERING &
ROADING CONTRACTORS**

Roading : Drainage : Sealing : Subdivisions

06 756 6080 – www.tccl.co.nz