



St John Bosco School

21 Clinton Street, New Plymouth. Phone (06) 758-3165

e-mail: office@sjb.school.nz, www.sjb.school.nz

Principal: Mr Dee Luckin

TERM DATES

Term 3
Mon 20 Jul - Fri 25 Sep

Term 4
Mon 12 Oct - Mon 14 Dec

EVENTS

School Cross Country
Tue 1 September

Teacher Only Day
Fri 4 September

NP Cross Country
Tue 8 September



From the Principals Desk...

Welcome: It is with great pleasure that we welcome Lexi White to room Puriri, Lexi joins her big sisters Chelsea and Amelia at school.

Covid19 Update: We continue to remain in Alert Level 2 and are continuing to implement our Level 2 Covid Safety Plan. It is fantastic to daily observe families respecting the following main points below. I would also like to thank our community for keeping everyone safe and like requested keeping children home who are presenting as unwell. This obviously has spiked our attendance rates lately but will prevent widespread illness. As we hear any developments in the coming days or weeks we will share these with you. We do feel incredibly confident in our processes and are well planned to move up or down alert levels.

What does this mean for St John Bosco?

- We will continue our hand washing protocols on arrival to school and sanitizing throughout the day.
- All common area surfaces will be sanitized daily.
- We will be reinforcing coughing and sneezing into the cuff of elbows.
- We ask that children who are sick or showing symptoms please stay home. We will also be asking children to be collected if they become unwell at school.
- We ask that students are not onsite prior to 8:15a.m. This is to allow us to clean surfaces.
- We are asking families not to enter school grounds and encouraging families to drop and collect children at one of our three main entrances (Walkway gate, Front entrance on Clinton Street or through our courtyard gate), only visit classes if essential or children require support to transition to school.
- Parents who come on site must log in via the school app, paper tracing registers in classrooms or through the Covid19 QR code at our main entrances.
- Parents must enforce social distancing of 1-2m while waiting to drop or collect children.
- Social gatherings of 100 or more will be postponed or cancelled.

Drinking fountains are closed, so children will need to bring a named drink bottle each day. We ask that

families leave school grounds soon after school finishing for the day. Our inter school games at this stage will be postponed under Alert Level 2 due to restrictions being applied in relation to social gatherings not exceeding 100. **In relation to school assemblies and gatherings alike we will continue to hold these as we see fit but restrict attendance to students and staff only.** Our After School Care programme will remain open and follow our Alert Level 2 guidelines.

Let's work together to keep everyone safe.

Physical Education Survey: We feel our specialist PE lessons with Ms Lynskey on Tuesdays and Fridays have been popular with, and beneficial to, our students. We are seeking some parent feedback on this. For the past two years we have employed what we would call a PE specialist teacher. The key roles being to

1. To ensure our Tamariki receive a minimum of 2 x 30 minute physical activity - skills sessions per week.
2. In line with wellbeing provide the opportunity to be active physically during the school learning day.

We have seen a significant change in our tamariki. We are noticing higher levels of engagement in physical activity, higher levels of engagement in breaktime games etc that the kids are organising, these games are attracting larger numbers of kids. We are also noticing higher engagement in class after a mental break and improved attitudes towards learning and physical activity. From a sporting perspective we are also seeing improved ball and movement skills.

We would like to gather some voice from our community. We are hoping that your children are coming home talking about PE, what they are doing, what they have learnt and hopefully you may be seeing some of the skills at home... We will also be surveying, children and staff.

If you would like to provide feedback please follow this link - [PE Survey Adults](#).

Cross Country: At this stage we are still working towards holding our school cross country on the 1st of September. Closer to the time we will reconsider this and outline what the event will look like for students and whanau. We are really hoping that whanau will be able to attend and support children but we may also go ahead as a school only event.

School Policy Review: This term we are reviewing our "Learning Support" Policy. If you would like to be a part of the review please follow the instructions below...

1. Visit the website <https://sjb.schooldocs.co.nz/1893.htm>
2. Enter the username (sjb) and password (21clinton).
3. Follow the link to the relevant policy as listed.
4. Read the policy.
5. Click the Policy Review button at the top right-hand corner of the page.
6. Select the reviewer type "Parent".
7. Enter your name (optional).
8. Submit your ratings and comments.
9. If you don't have internet access, school office staff can provide you with printed copies of the policy and a review form.

Teacher Only Day: As a part of the teachers collective agreement the Government has allocated all schools in New Zealand 8 teacher only days to be scheduled over the next three years. The purpose of these days is to allow primary school teachers the opportunity to

- refresh and deepen their knowledge and practice around the local curriculum (within the context of the removal of national standards)
- Strengthen their understanding of the use of assessment tools for learning and teaching
- Respond to the recommendations of the education work programme in the Curriculum, Progress and Achievement (CPA) Report
- Familiarise themselves with curriculum work changes that will become available over the term of the collective agreements.

We have a Teacher Only Day Scheduled for Friday 4th September. School will be closed for the day to allow all staff to take part in professional development.

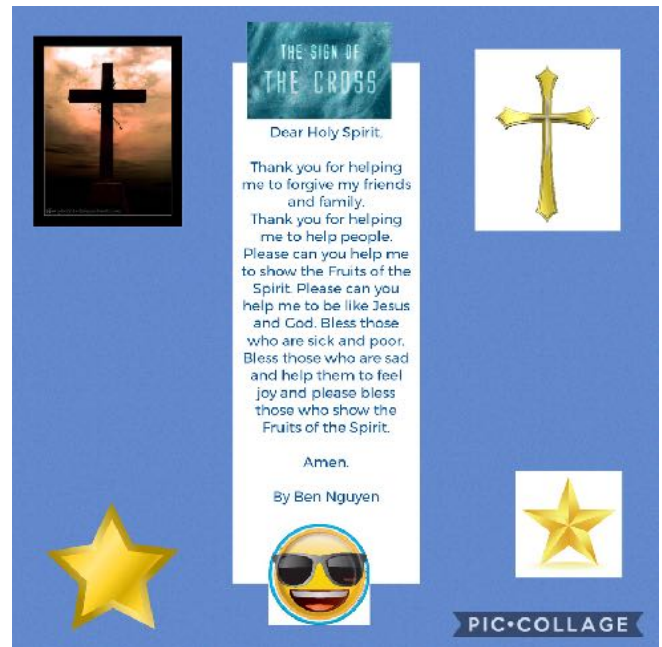
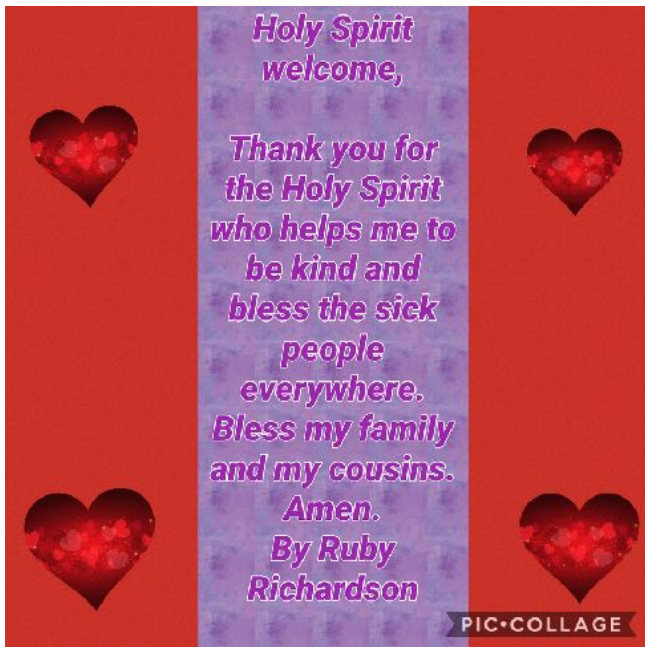


Wanted for Junior Adventure Time!

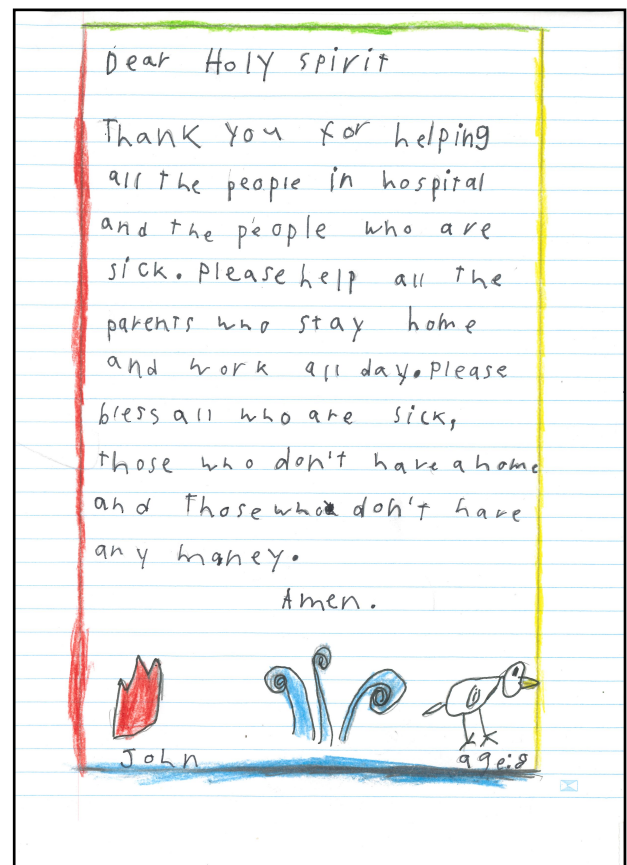
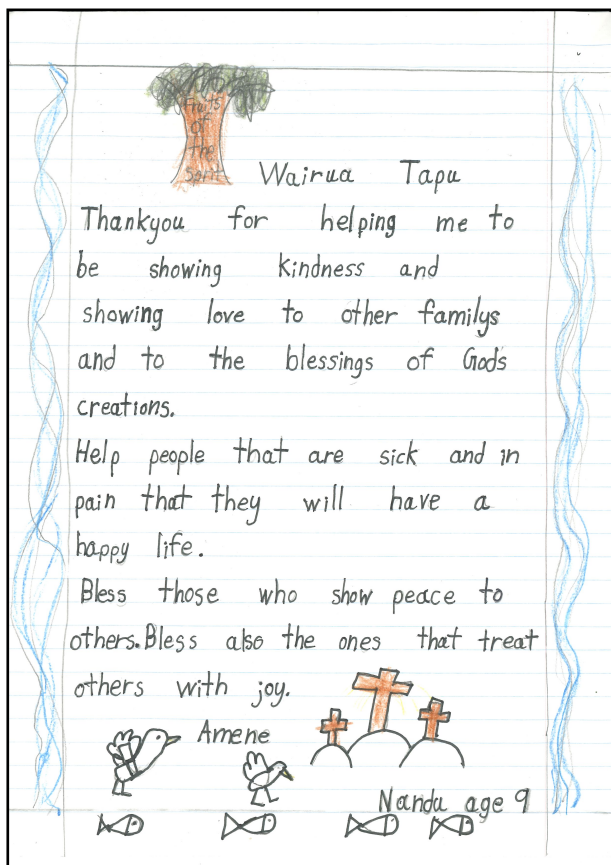
Large cereal boxes (weet-bix etc)
Dress ups/costumes that are no longer used
Any play equipment in good condition for imaginative play e.g. dolls house, kitchen etc...
Drop off to the School Office or Room Puriri



Prayers from Room Kowhai



Prayers from Room Pohutukawa



Mission Statement

To provide a Catholic environment where children's rights and individual needs are always considered, independence and confidence are fostered and children are challenged to produce their best efforts.



From the Parish:

*During Level 2 – Numbers are limited to 100 at each Mass centre.
Please do not be offended if you are turned away.
Please book online to attend weekend Mass.
Go to www.catholicparishnp.nz for the link*

BAPTISM FOR OLDER CHILDREN (7yrs or older): Our preparation programme begins on Sunday 1 November for three weeks. Please contact Michelle if you wish to enroll or for further information. Any queries regarding the sacramental programmes please contact Michelle, youngfamilyminister@catholicparishnp.nz

Baptism enrolment forms are also available at our school office.

Class Mass Timetable

Week 6	Wednesday 26th August	Karaka, Rimu
Week 7	Wednesday 2nd September	Pohutukawa, Kowhai
Week 8	Wednesday 9th September	Horoeke, Nikau
Week 9	Wednesday 16th September	Koromiko, Kawakawa, Puriri
Week 10	Wednesday 23rd September	Totara, Kauri



Mrs Peck Aro is missing lots of Reading Recovery books for the students. Amnesty - for any with Rainbow stars or Rdg Rec on them.

Leave any found or brought back from home on the stairs please TIA

Mrs P.A.



THE TARANAKI TOY LIBRARY

CHILDREN'S

MONSTER BOOK SALE!

FRI & SAT, 19TH & 20TH SEPTEMBER

WE ARE COLLECTING GOOD QUALITY 2ND HAND BOOKS NOW!

Enhance a child's learning - Please donate your unwanted children's books so they can be enjoyed by others

Drop off to your school reception by 23rd August, or deliver direct to the Taranaki Toy Library at 524 Devon Street E. Fitzroy (beside Knox Church)

Thank you for supporting your local community Toy Library



Our School Core Values

Love

Resilience

Co-operation

Service



Nikki Keegan

Licensed Salesperson

M 021 022 82757

E nikkik@westfnat.co.nz

W www.newplymouthfn.co.nz



first national
REAL ESTATE | Western



Abraham's
FUNERAL HOME

Mark & Megan Baker

Family owned since 1924

info@wabraham.co.nz

wabraham.co.nz | 06 757 5210



Dwane & Kirsty Lilly Ph: (06) 757 4292
70 Hurlstone Drive, Waiwhakaiho, New Plymouth
Mobile: 0274 408 970
bell-blockpanelbeaters@xtra.co.nz

**Save money
and make
memories**

Manchester Unity members
can access these great benefits:

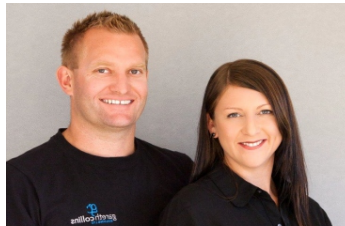
- Holiday homes around New Zealand
- Shopping discounts at large retailers
- \$9 movie tickets – plus much more

Manchester Unity is New Zealand's largest friendly
society and are proud of the rich history of
members helping members for over 160 years.

membership
ONLY
\$43
per year!

Manchester Unity
Making Life Affordable

Contact: Rebecca 06 758 0769 or taranaki@manchesterunity.org.nz



NEW HOMES | RENOVATIONS
LIGHT COMMERCIAL | LANDSCAPING

Tania | 0276742557

Gareth | 0277776993

Email | info@gcbuilding.co.nz

garethcollins
BUILDING LTD



Subdivision • Land Development •
Resource Consents

BLAND & JACKSON
SURVEYORS LTD

For many, property is our number 1 asset. Contact Vaughan Maclean
for a no obligation consultation to review your properties potential for subdivision.

visit: www.bjls.co.nz / (06) 7586171 / (027) 282 5665 / vaughanmaclean@bjls.co.nz

Pure Dental

Kenny Gallacher
Dental Surgeon BDS (Glasgow)

Natasha Bell
Dental Surgeon BDS (Adelaide)

Kimberley Roper
BDS (Dundee) MJDF

Lizelle Koen
Dental Hygienist

Angela Henderson
Dental Hygienist

Jordan Wearne
Dental Hygienist

465 Devon Street East, New Plymouth, Ph 06 758 5629

**EXPERT
APPLIANCE REPAIRS
GUARANTEED!**

PH: 06 755 2028

FAX: 06 755 2528

EMAIL: d.l.appliances@xtra.co.nz



188 Parklands Ave
Bell Block
New Plymouth 4312

Whiteware & Heat
Pump Specialist
Service
Parts
Sales

www.dandlappliances.co.nz



JANE PARKER

The Finance Lady

in association with **CreditOne**
Smarter Finance

☎ 06 757 9060

📞 027 350 8687

✉ jane@thefinancelady.co.nz

🌐 www.thefinancelady.co.nz

The best thanks The Finance Lady can receive is a recommendation to your friends and family



Taranaki Civil
CONSTRUCTION LTD

**CIVIL ENGINEERING &
ROADING CONTRACTORS**

Roading : Drainage : Sealing : Subdivisions

06 756 6080 – www.tccl.co.nz